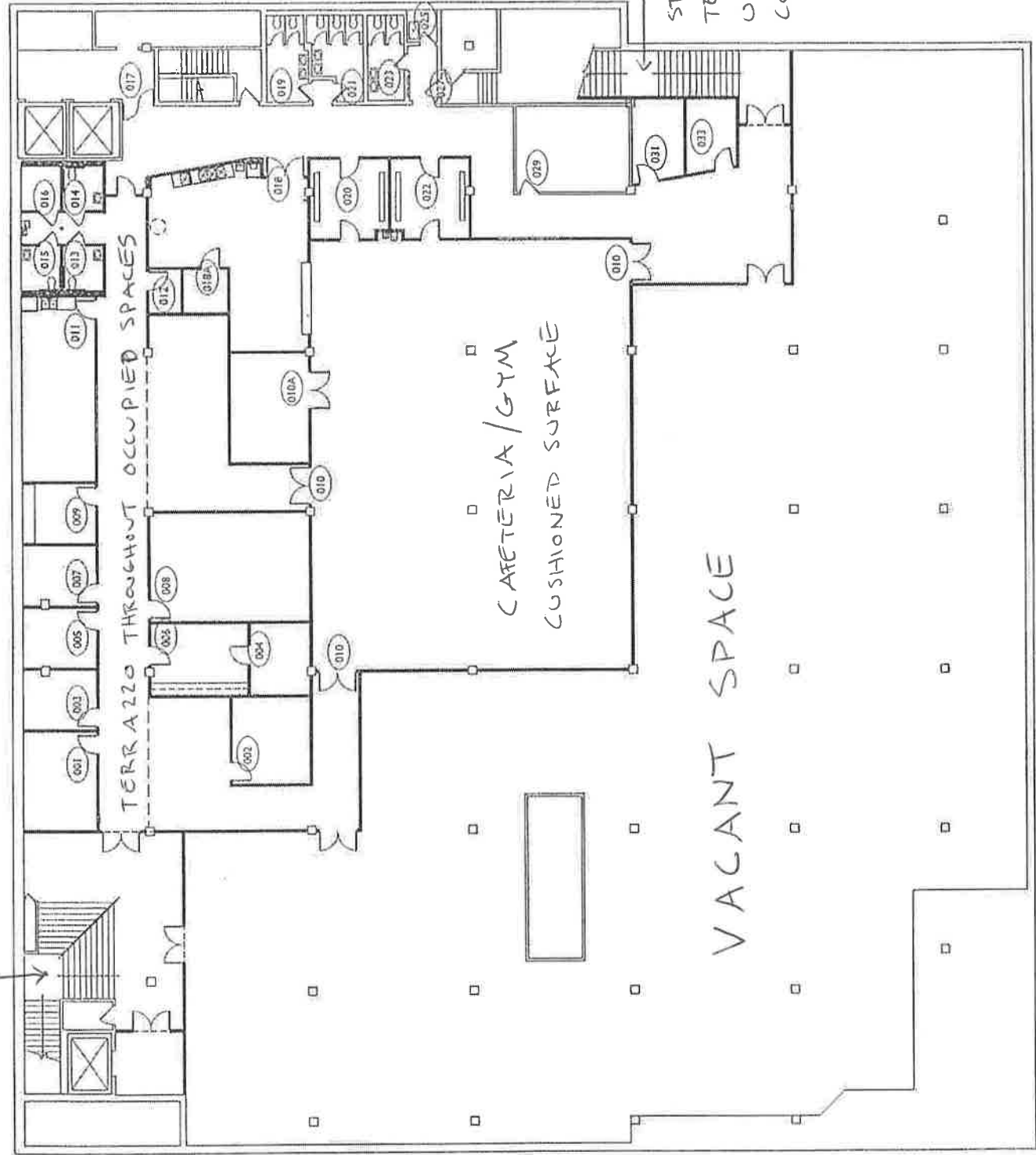


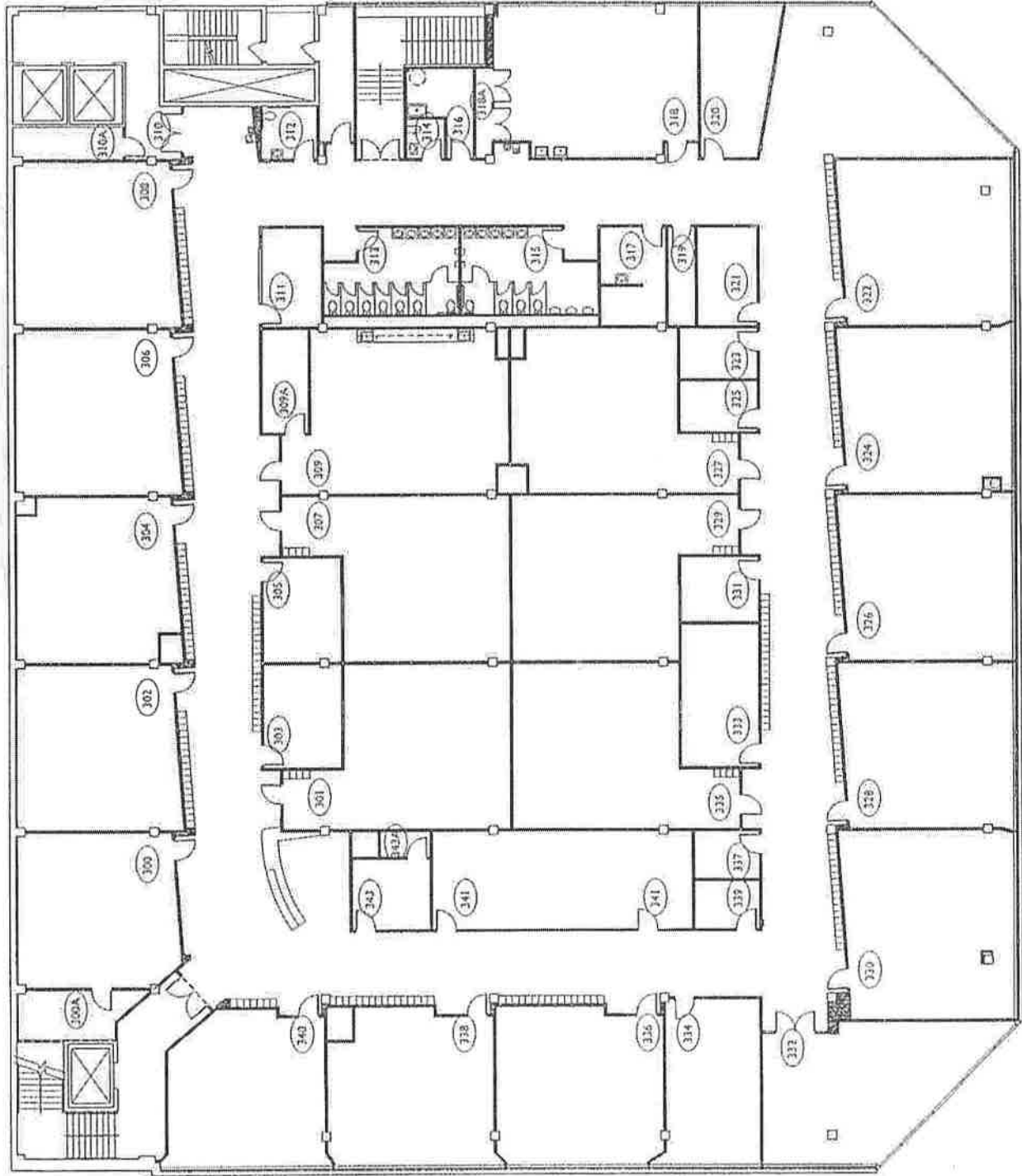
STAIRS + LANDING - STEEL PLATE

- NOTE:
- FIRST FLOOR VESTIBULE (NOT SHOWN) IS CARPETED
  - FRONT STAIRS BETWEEN FL ONE - THREE TERRAZZO



Freire Middle School - Basement (1026 Market St)

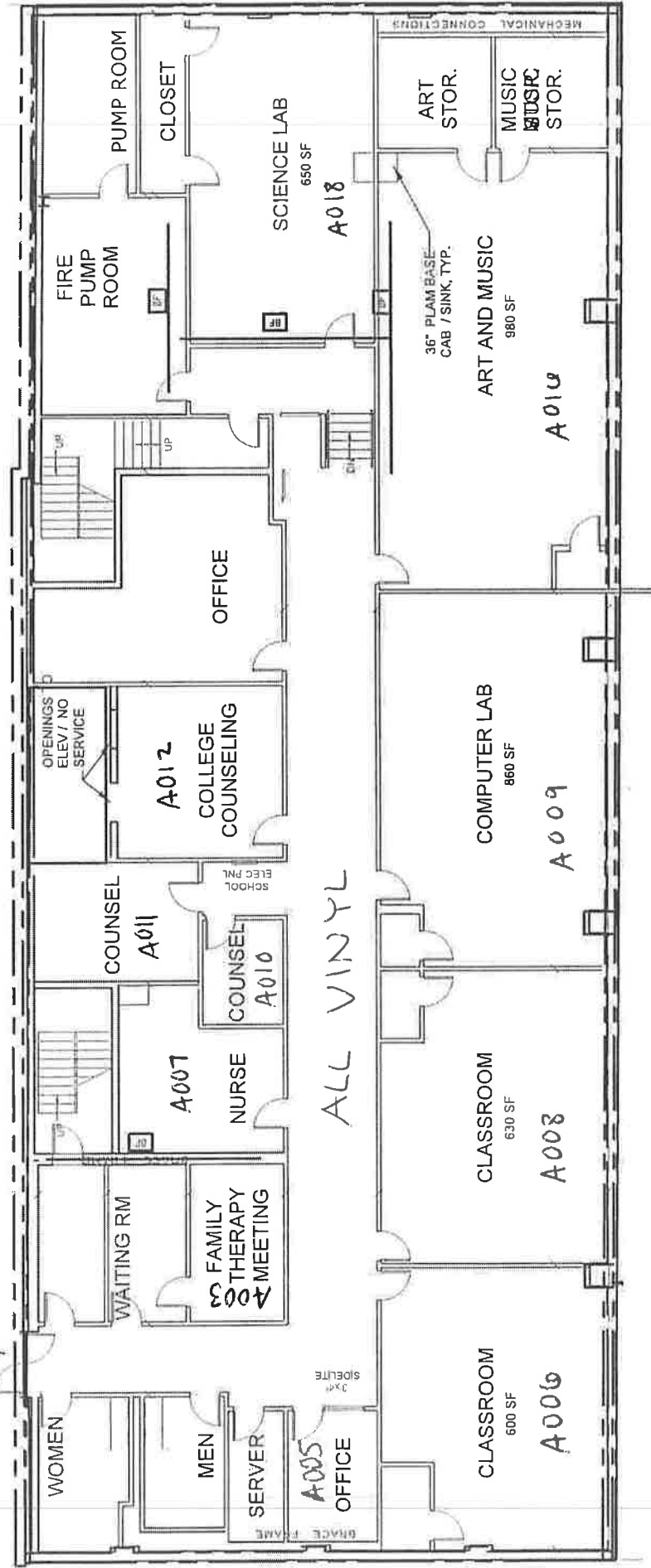
VINYL FLOORING THROUGHOUT



Freire Middle School - Third Floor (1026 Market St)

ACCESS TO EXISTING SCHOOL BASEMENT

EXISTING FREIRE CHARTER SCHOOL IN ADJACENT BUILDING

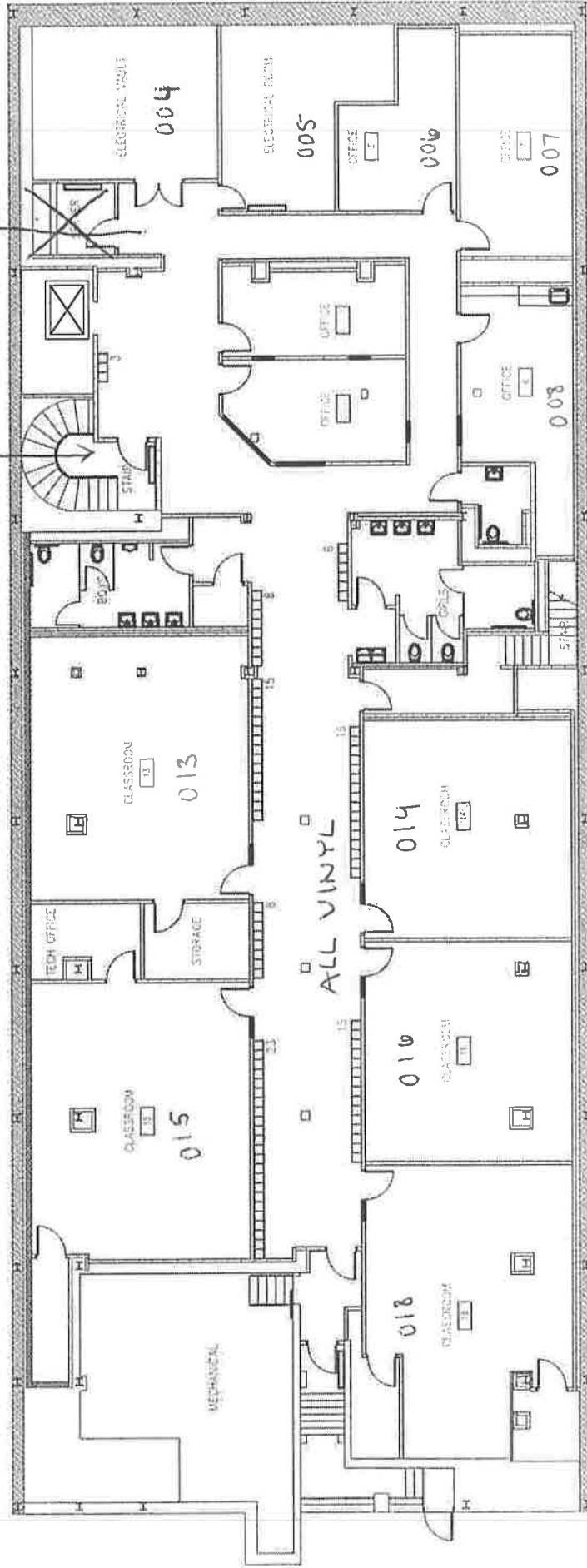


ALL VINYL

HIGH SCHOOL ANNEX (BASEMENT OF 2021 CHESTNUT ST)

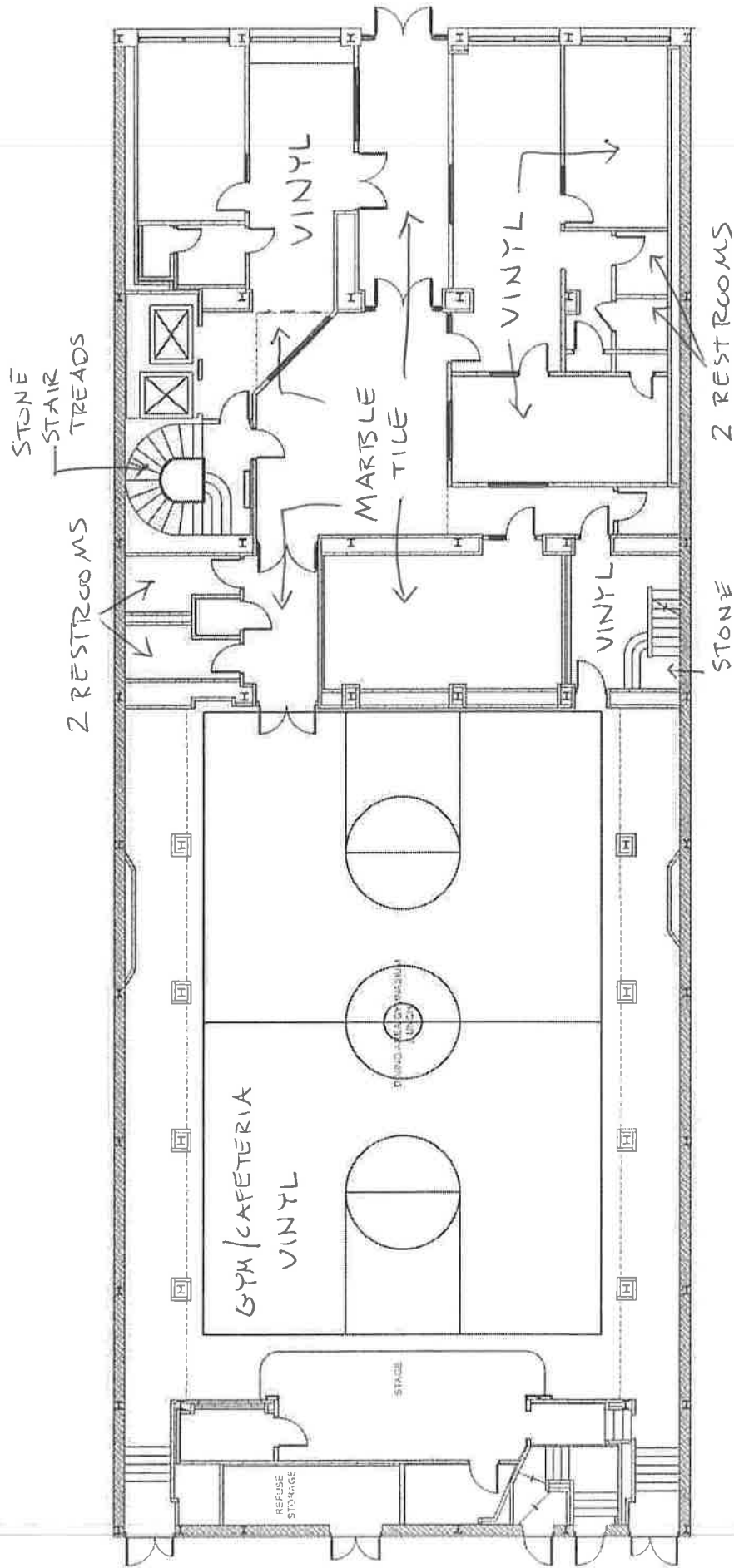
Access to Annex

TERRAZZO  
LANDING



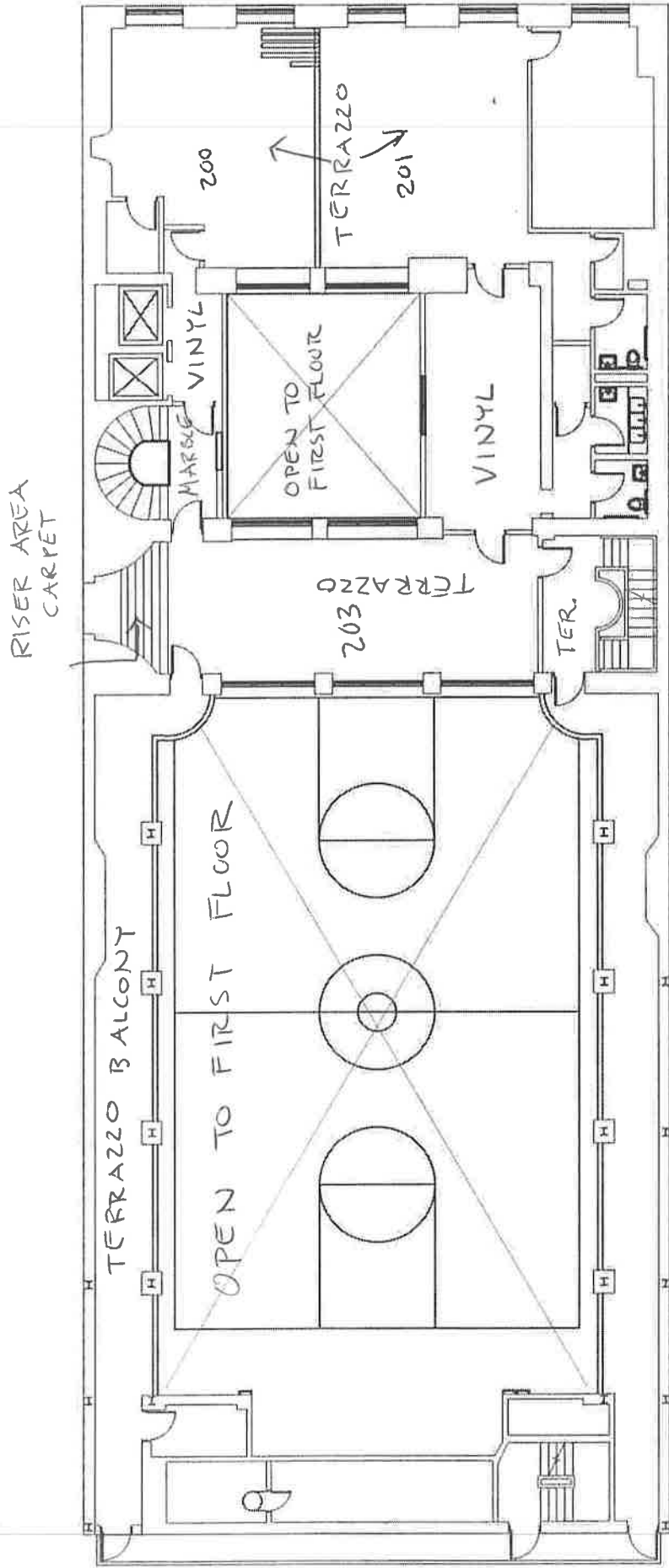
BASEMENT PLAN - HIGH SCHOOL - 2027 CHESTNUT ST

SCALE: 1/8"=1'-0"



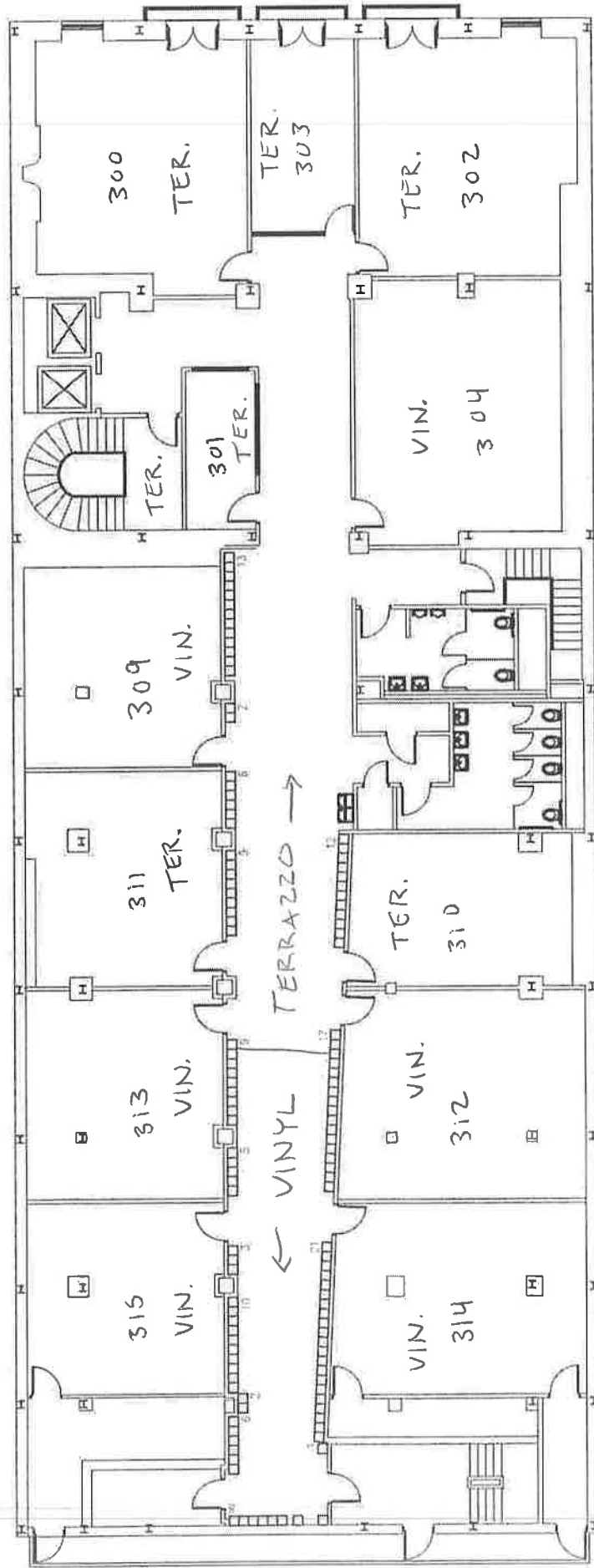
FIRST FLOOR PLAN - HIGH SCHOOL - 2027 CHESTNUT ST

SCALE: 1/8"=1'-0"



SECOND FLOOR PLAN - HIGH SCHOOL - 2027 CHESTNUT ST

SCALE: 1/8" = 1'-0"



THIRD FLOOR PLAN - HIGH SCHOOL - 2027 CHESTNUT ST

SCALE: 1/8"=1'-0"